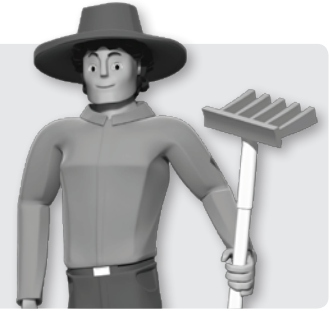


Carbon Tradies: Worksheet 4 – Gary the Gardener

Go to www.missionco2.com, click on Play and watch the introduction to meet the Carbon Tradies. Enter your name to begin.

Select Gary the Gardener and watch his introduction for information that will help you with the following questions and activities.



1. On a map of your local region mark in where the mains water used in your neighbourhood comes from, ie, mark in the location of any reservoirs or other sources of mains water. How does the water get from the main source to where you live? If possible mark this on your map.

.....
.....

2. Which water provider is responsible for the supply of water to your local area? During the past five years describe any special activities relating to the supply of water, eg water restrictions. Check the website of your local water provider, if necessary. Why were these activities undertaken?

.....
.....
.....

3. Why is a sub-surface irrigation system a good way to water the plants in your garden?

.....
.....

4. What is “greywater” and where might it be used?

For information go to www.savewater.com.au/how-to-save-water/in-the-home and click on Greywater.

.....
.....

5. About what percentage of the average household’s water consumption is used in the garden? On your water bill (ask your parents to show you) it tells you how much water you have used. How much water was used on your property during the last year? About how many litres would have been used on the garden?

.....
.....
.....

6. Collecting and storing rainwater in a tank and using the water on your garden can reduce the amount of mains water you use. Each square metre (m²) of roof area collects 1 litre of water from every 1 millimetre (mm) of rainfall received, so if you have a roof area of 100m² (eg, a roof 10m x 10m or 20m x 5m) from which the rainwater will flow into a tank, 1,000 litres can be collected from 10mm of rain. If you have a roof area of 100m² how much rain will need to fall and be stored in a tank and used to water your garden for a year?

.....
.....

Carbon Tradies: Worksheet 4 – Gary the Gardener

7. What is the average annual rainfall in your area, and what has been the rainfall during each of the past five years? For information go to **www.bom.gov.au/climate**, select *Weather & climate data and Daily rainfall* and for *Observations* select *Monthly*, type in your location and select a local weather station. Your local water provider and council should also be able to provide you with this information.

.....

.....

.....

8. State two advantages you can gain by having drought tolerant trees and plants in your garden? Would you plant deciduous or evergreen trees? Explain why.

.....

.....

.....

9. How can water applied to the garden be lost, and what can be done to help reduce this water loss?

.....

.....

10. If you wanted to install lights in your garden why are solar-powered lights recommended?

.....

.....

11. Go to the Mission CO2 Home page, click on Fun Stuff and Meet the 'Carbon Tradies' and select Gary. What suggestion has he that will help you improve your garden and reduce waste and help you save on fertiliser and hence save money?

.....

.....

Further information

For more information on how you can save water at home, work or school visit **www.savewater.com.au** or contact your local water provider.

